



# Caledonian

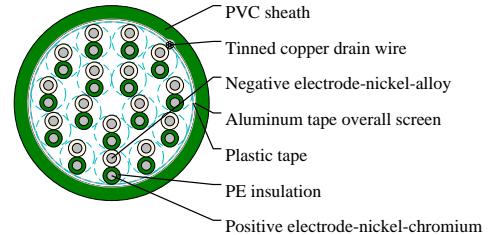
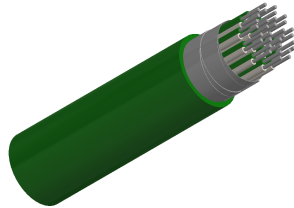
Thermocouple Cables

www.caledonian-cables.com

marketing@caledonian-cables.com

## Multipair Overall Screen

KX OS 16P1



## APPLICATIONS

These cables are used in thermocouple circuits, petrochemical plants, utilities and industrial plants.

## CABLE CONSTRUCTION

Conductor: Solid

Type applicable: KX, EX, JX, TX, NX, KCA, KCB, RCA, RCB, SCA, RCB, BC

Insulation: PVC, PE, XLPE or LSZH thermoplastic material

Wrapping: At least 1 layer of plastic tape

Overall screen: 24 µm aluminium / PETP tape over 7-stranded tinned copper drain wire, 0.5mm<sup>2</sup>

Outer sheath: PVC or LSZH thermoplastic material

## COLOUR CODE

According to IEC 60584-3

## PHYSICAL AND THERMAL PROPERTIES

Flame retardancy: IEC 60332-1

Flame propagation: IEC 60332 cat. C

Temperature range: -30°C up to 70°C during operation. -5°C up to 50°C during installation.

## DIMENSION AND PARAMETERS

No. of Pairs	Conductor Size	Nominal Insulation Thickness	Nominal Outer Sheath Thickness	Nom. Overall Diameter	Approx. Weight
	mm <sup>2</sup>	mm	mm	mm	kg/km
16	1	0.4	1.4	18.3	568